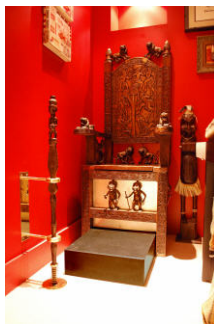


T +44 (0)20 7407 3336  
 F +44 (0)20 7407 3340  
 E [info@form-architecture.co.uk](mailto:info@form-architecture.co.uk)  
 W [www.form-architecture.co.uk](http://www.form-architecture.co.uk)

1 Bermondsey Exchange  
 179-181 Bermondsey St.  
 London SE1 3UW



## Press Release

### FORM Design Architecture completes striking penthouse apartment in Spitalfields

FORM Design Architecture has transformed a penthouse apartment in Spitalfields with a design that maximises the usable space of the 210m<sup>2</sup>, 3 bedroom apartment. The interior has been designed as a series of interconnecting spaces that either be open, revealing the full scale of the apartment, or rooms can be closed off from one another using concealed doors.

The existing oddly positioned internal partitions have been replaced with new walls and unnecessary corridors removed. The design includes an imaginative solution to address fire regulation issues and to increase the sense of free-flowing space. The existing escape door has been relocated into a new lobby and a new fire curtain concealed in the ceiling, allowing the living room to be enlarged and opened up into the double height entrance hall.

The apartment features a dramatic new walnut staircase, suspended from the ceiling on stainless steel rods and positioned in front of a double height blue-suede clad wall for the display of the client's paintings. The use of walnut is continued for the built-in joinery in the kitchen, living room and main bathroom. Guests requiring light relief can find this in the African throne cloakroom!

Ends

June 2009

For further information, please contact:

Mike Neale, FORM design architecture 020 7407 3336 [mike.neale@form-architecture.co.uk](mailto:mike.neale@form-architecture.co.uk)

- T +44 (0)20 7407 3336
- F +44 (0)20 7407 3340
- E [info@form-architecture.co.uk](mailto:info@form-architecture.co.uk)
- W [www.form-architecture.co.uk](http://www.form-architecture.co.uk)

1 Bermondsey Exchange  
179-181 Bermondsey St.  
London SE1 3UW

## About FORM Design Architecture

FORM Design Architecture is a growing practice based in Bermondsey, London. Directors Jeremy Lingard and Malcolm Crayton established the practice in 1998, after working together at The Bartlett. Since then the practice has designed a wide range of projects for both private and commercial clients including residential, leisure, commercial, exhibitions and mixed developments. The practice is skilled at both new build and renovation, working with sensitive sites and with significant technical challenges.

FORM Design Architecture aims to create places that can be inhabited and experienced by people in a natural and instinctive way. Places with an apparent sense of simplicity which belies their underlying complexity.

For more see: [www.form-architecture.co.uk](http://www.form-architecture.co.uk)